



Scaldersitch Farm Circular Walk

**Scaldersitch- Beresford Dale- Hartington Village
(approx. 1 hour 15 mins) We recommend printing
this ahead of your stay**

Leave Scaldersitch Farm and head to the top of the drive, cross the lane and continue over the stile.



Continue straight over the hill and you will see another stile at the bottom. Cross the main road and continue over the next stile, and down the field.



As you walk down the field, you will see a stile in the corner or a gate to pass through (please note this can be quite boggy even in summer) Continue through and as you continue – aim to walk between the two large trees and this will lead you towards the farm.



After passing between the trees the footpath leads you through a gate and then carry on towards the farm, go over the stile and the path skirts around the left of the



farmyard. Follow the path until it crosses the farm driveway- and take the footpath on the right that continues straight ahead alongside the woodland areas.

After the woodland ends you will come to a gate-
continue

heading straight on towards the hill in the distance, across the fields.

You will pass a stile on its own in the middle of the field and will come to a stile crossing with

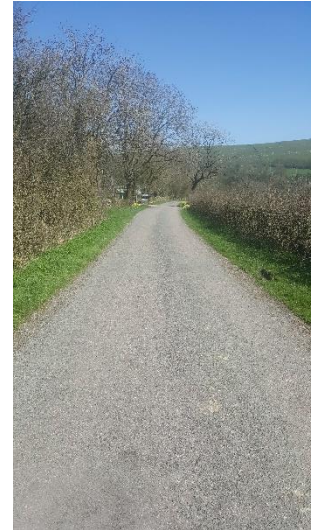


little stepping stones to guide you. Keep following the path until you meet a quiet lane.

Join the lane, turn left and carry on along the lane- past the caravan site until you meet the river at Beresford Dale.

At the river, you will see a path on your left and this is the path up to Hartington. If you wish to extend your walk - cross the bridge and follow the riverside walk along the dale.

Back to Hartington



Follow the path signposted to Hartington- alongside the river, across open fields and it will bring you out behind the public toilets and Hartington Farm Shop.

To return to Scaldersitch (approx. 20 mins) - directly opposite the Hartington Farm Shop there is an alleyway between houses (find the footpath marker). Go through the alleyway and follow the path across the fields aiming for the Mill house next to the main road.

The path crosses the bridge over the river on the main road and then goes into the field on the right. As you look up at the hill, you need to be aiming for the right hand side of the buildings and once up there you will see a path which goes up some steps and through the farm yard, along the farm drive at



Bank Top Farm and meets the Sheen lane. Scaldersitch Farm is left along the lane and then the first farm drive on your right hand side.

We hope you have enjoyed your walk